

# DUDLEY electroflo® taps

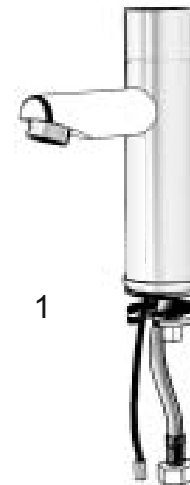
## Models:

Electroflo Contemporary Light Touch  
Electroflo Contemporary B Light Touch

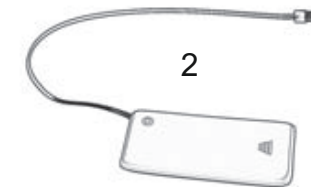
Electroflo Contemporary Light Touch  
Illuminated



## Pack Contents



1. 1 x Tap and attachments
2. 1 x Battery box (Battery version only)
3. 1 x Allen key



**Thomas Dudley Ltd**  
PLASTIC CISTERN MANUFACTURERS

Dauntless Works, P.O.Box 28, Birmingham New Road,  
Dudley, West Midlands, DY1 4SN

Telephone: 0121 530 7000

Fax: 0121 557 5345

E-mail: [sales@thomasdudley.co.uk](mailto:sales@thomasdudley.co.uk)

## Product control:

## Installation:

## Operating water pressure:

## Power specification:

## Power source:

## Default flow time:

## Programmable flow time:

Touch using Piezo technology

Deck mounted

0.5-8.0 bar (7-116 PSI)

With water pressure of more than 8 bars,  
use a pressure reducing valve

9V low voltage system

1 x 9V battery or 9V transformer

8 seconds

1 - 60 seconds

## Operation

To operate Electroflo Contemporary and Contemporary LT, simply touch the designated area at the piezo cap on top of the tap. The default flow time is 8 seconds. During this period you can stop the water flow by touching the designated area again.

## Pre-installation Information

### Check contents

Separate all parts from the packaging and check each part with the “pack contents” section.

Pay attention to the different model variations.

Make sure all parts are accounted for before discarding any packaging material.

If any parts are missing, do not attempt to install your electronic tap until you obtain the missing parts.

### Preparation for installation

Flush water supply lines thoroughly before installing the tap. **Do not allow dirt, PTFE tape or metal particles to enter the tap.**

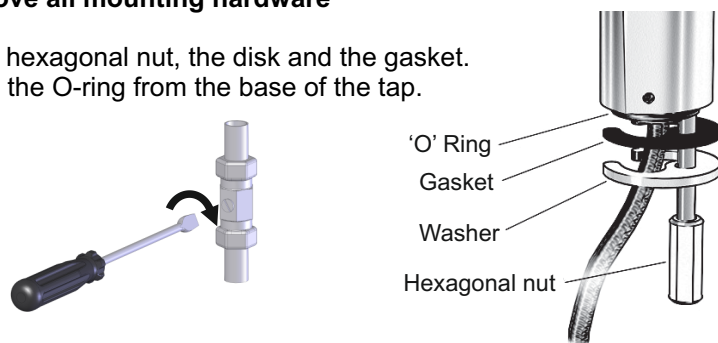
**Important - Plumbing must be installed in accordance with applicable codes and regulations.**

**Installation of the mains adaptor must be carried out and checked by a qualified electrician. During installation do not expose the electronics to fluids, dust, dirt or damp.**

## Tap Installation

### Step 1 – Remove all mounting hardware

1. Remove the hexagonal nut, the disk and the gasket.  
Do not remove the O-ring from the base of the tap.



### Step 2 - Installing the tap

1. Place the tap with the O-ring into a 30mm hole in the work surface or basin. Make sure the O-ring is located between the work surface or basin and the bottom of the tap.

2. Secure the tap to the work surface or basin with the washer and hexagonal nut ensuring no pipes or wires are trapped.

## Trouble Shooting

### No water is coming out of the tap:

Check the battery and replace if necessary.

Check the flow time.

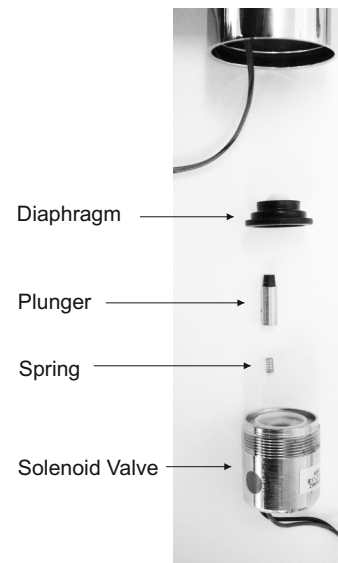
Check the connection between the piezo cap connector and the solenoid connector.

Check that the battery box is correctly connected.

Check the diaphragm. If necessary, clean the orifice or replace it.

Check the solenoid valve. If debris or scale are present, unscrew the solenoid valve, pull out the plunger and the spring and clean them. Use scale remover if necessary. When replacing the spring, make sure it is in the vertical position.

Check the water supply pressure. It must be 0.5 - 8 bar (7 - 116 PSI). With water pressure of more than 8 bar, use a pressure reducing valve.



### Water flow does not stop:

Check the flow time and if necessary adjust it.

Check the solenoid valve. If debris or scale are present, unscrew the solenoid valve, pull out the plunger and the spring and clean them. Use scale remover if necessary. When replacing the spring, make sure it is in the vertical position.

### Water flow diminished:

Check the filter and if necessary remove, clean it and reinstall.

## Low Battery Indicator

When the batteries are low, the battery level management system does not allow the solenoid valve to open. On Contemporary taps the LED at the back of the cap will blink three times when the battery level is low and the user touches the designated area. Water will not flow since the solenoid will not be opened.

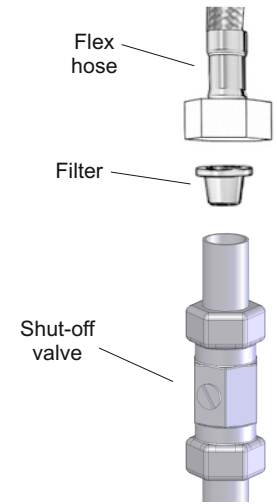
## Battery Replacement

1. Remove screw and carefully open the battery box.
2. Remove old battery.
3. Replace with a new 9V battery (Lithium battery is recommended).
4. Make sure that no water has entered the battery box during the replacement process, close the battery box and replace the screw.
5. To avoid entering adjustment mode do not touch the piezo cap for 10 seconds.

## Tap Installation continued.

### Step 3 – Connecting the water supply

1. Turn off the water supply.
2. **Make sure that the filter is installed in the correct orientation between the flexible pipe and the shut off valve (not supplied).**
3. Connect flexible pipe to the water supply.
4. Turn on the mains water supply and open the shut-off valve.
5. Check for leaks.



### Step 4 – Connecting the power source

1. Connect the power source:  
For battery model: install the battery box underneath the sink using the double sided adhesive tape or screws.
- Important:** In order to avoid entering the adjusting mode, wait 10 seconds before operating the system.

## Maintenance

### Filter Cleaning Instructions

This tap is provided with a stainless steel filter to prevent foreign particles from entering the tap. If the water flow has decreased, this can be because the filter is clogged. The filter can be cleaned as follows:

1. Turn-off the water shut-off valve.
2. Disconnect the flexible pipe.
3. Remove the filter and wash under running water.
4. Reassemble the parts.
5. Turn on water supply and make sure that there is no water leakage.

### Care and Cleaning of Chrome and Special Finishes.

**DO NOT** use steel wool or cleansing agents containing alcohol, acid, abrasives, or the like. Use of any prohibited cleaning or maintenance products or substances could damage the surface of the tap. For surface cleaning of the tap use **ONLY** soap and water, then wipe dry with a clean cloth or towel. When cleaning bathroom tiles, the taps should be protected from any splattering of harsh cleansers.

## Flow Time Adjustment

The default flow time on the tap is 8 seconds, but this can be adjusted if required.

The adjustment of the flow time is split into 3 stages and thought must be applied to each of the stages, prior to adjusting the unit.

### Stage one

In stage one the time can be adjusted by up to 10 increments of 1 second (total 10 seconds)

### Stage two

In stage two the time can be adjusted by up to 10 increments of 2 seconds (total 20 seconds).

### Stage three

In stage three the time can be adjusted by up to 2 increments of 15 seconds (total 30 seconds).

Example 1 - an adjustment of flow to 20 seconds could be carried out by:

- 1 increment in stage 1 (Total flow time = 1sec)
- 2 increments in stage 2 (Total flow time = 5sec)
- 1 increment in stage 3 (Total flow time = 20sec)

Example 2 - an adjustment of flow to 9 seconds could be carried out by:

- 1 increment in stage 1 (Total flow time = 1sec)
- 4 increments in stage 2 (Total flow time = 9sec)
- 0 increments in stage 3 (Total flow time = 9sec)

	Number of touches per stage		
	Example 1	Example 2	Your Installation
Stage 1	1	1	
Stage 2	2	4	
Stage 3	1	0	
Total Seconds	20 sec	9 sec	

### How to adjust the flow time -

1

**Establish your desired total flow time and how many increments you intend to make in each stage and write in the table above.**

2

Open the piezo cap using the Allen key provided.

**Note** - When adjusting Contemporary LT there is no need to remove the cap.

3

Disconnect the battery or power supply.

**Return to this stage if you make a mistake at any time**

4

While the power source is disconnected, verify that the solenoid valve is installed and touch the piezo cap twice to discharge any remaining power.

## Flow Time Adjustment

**Please read and understand sections 5 - 9 before performing any other operations.**

5

Reconnect the battery or power supply.

6

The indicator light (LED) on the back of the piezo cap will blink quickly 4 times, after which the LED will give a steady red light for approx 2 seconds. Press the piezo cap when the steady red light is on, the tap will immediately enter into stage 1 of the adjusting mode. When done correctly the light will stop shining.

**If you do not press the cap during the 2 seconds of steady red light the tap will return to its normal operating mode and the previous setting will remain**

### 7 – Stage 1

Press the cap the required number of times for stage 1. The LED will flash once whenever a press has registered correctly. After a short period the unit will cycle to the next stage.

### 8 – Stage 2 (LED will flash 2 times)

Press the cap the required number of times for stage 2. The LED will flash once whenever a press has registered correctly. After a short period the unit will cycle to the next stage.

### 9 – Stage 3 (LED will flash 3 times)

Press the cap the required number of times for stage 3. The LED will flash once whenever a press has registered correctly. After a short period the unit will cycle to the next stage.

The LED will now flash 4 times to indicate that the adjustment is complete and that the tap is now operational.

### Note:

If you do not touch the cap during one of the stages then the value recorded will be zero

### Contemporary I -

The procedure for adjusting the Contemporary LT is the same as above however the feedback from the LED light will be replaced by the light ring on top of the tap.

### Adjusting the Aerator

This tap includes a special aerator that allows you to adjust the water stream direction on site in order to prevent water splashing if needed. To change the angle of the water stream, simply move the adjustable tilting plate by pressing it.

